

## [specifications]

### Field of View

- **Stand Position 1**
  - FOV Size (inch) 1.10" x 1.10"
  - Max Code Size (inch) 1.00" x 1.00"
  - Minimum X Dimension 10 mils
- **Stand Position 2**
  - FOV Size (inch) 1.30" x 1.30"
  - Max Code size (inch) 1.20" x 1.20"
  - Minimum X Dimension 15 mils

### Physical Characteristics:

- **Stand Dimensions** (with imager in stand):
  - Height: 11.05 inches
  - Width (max): 7.90 inches
  - Depth: 8.25 inches
- Total Weight (stand + imager) is 4.0 lbs

### System Requirements:

- Windows® XP SP3 (32 bit), Windows 7 (32 bit/64 bit), Intel® Core™2 Duo Processor, 2GB of RAM, USB port 2.0, Microsoft .NET Framework 3.5 SP1, Microsoft Office Excel, Microsoft internet Explorer, Adobe Reader

### Imager Specifications:

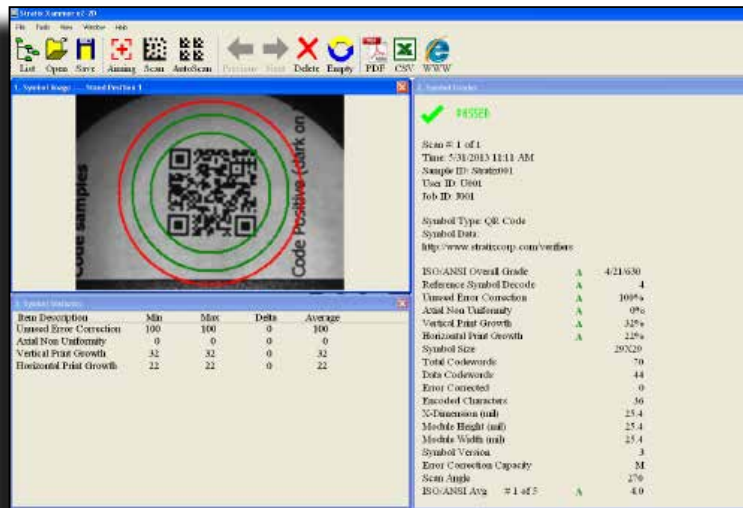
- **Imaging Characteristics:**
  - 1.3 Megapixel imager (1280 x 1024)
  - Light Source: Aiming - 650 nm laser diode, Illumination – 630 nm LED
- **Regulatory Specifications:**
  - Electrical Safety: UL 60950-1, C22.2 No. 60950-1, EN 60950-1, IEC 60950-1
  - Laser Safety: EN 60825-1, IEC 60825-1, 21CFR1040.10
  - EMI/RFI: IEC 60601-1-2, FCC Part 15 Class B, ICES 003 Class B Environmental: RoHS Directive 2002/95/EEC
- **User Environment:**
  - Operating temperature: 32° to 122° F/ 0° to 50° C
  - Storage temperature: -40° to 158° F/40° to 70° C
  - Drop specifications: Withstands multiple 6 ft. (1.8m) drops to concrete
  - Environmental sealing: IP41
- **Warranty:**
  - 5 years (60 months) from the date of shipment



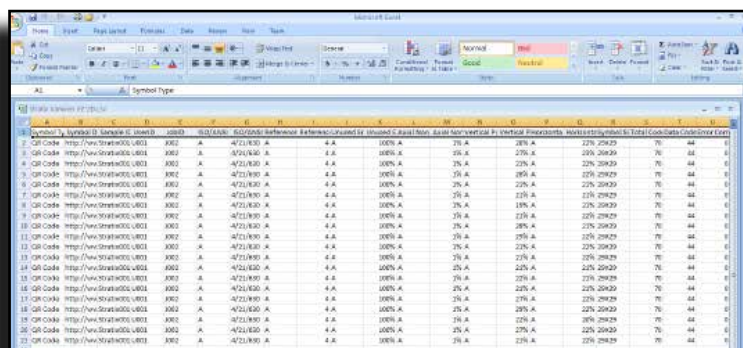
### Features

- Most affordable 2D verifier on the market
- PC Based Verification Solution
- Symbologies Supported – QR Code and Data Matrix (ECC-200)
- Partial ISO/IEC Grading (ISO/IEC 16022, ISO/IEC 15415, ISO/IEC 15426-2, ISO/IEC 18004)
- Calibrated to GS1 Data Matrix Calibrated Conformance Standard Test Card (NIST Traceable)

### Software Screen Shot:



### Excel Report:



**Xaminer eZ-2D Verifier Package Includes:**

Carry Case, Imager & USB Interface Cable, Stand, Calibration Files CDI, Verifier Software & Scanner Driver CD2, Installation Guide, Product Reference Guide, 2D Calibration Check Card & Certificate of Calibration

### Stratix Symbol Verification Report

Scan #: 3 of 5 Passed

Time: 6/12/2013 10:47 AM  
 Sample ID: Stratix001  
 User ID: U001  
 Job ID: J001

[URL Link](#)



Symbol Type: QR Code  
 Symbol Data:  
<http://www.stratixcorp.com/verifiers>

|                           |          |          |
|---------------------------|----------|----------|
| ISO/ANSI Overall Grade    | A        | 4/20/630 |
| Reference Symbol Decode   | A        | 4        |
| Unused Error Correction   | A        | 100%     |
| Axial Non Uniformity      | A        | 1%       |
| Vertical Print Growth     | A        | 28%      |
| Horizontal Print Growth   | A        | 10%      |
| Symbol Size               |          | 29X29    |
| Total Codewords           |          | 70       |
| Data Codewords            |          | 44       |
| Error Corrected           |          | 0        |
| Encoded Characters        |          | 36       |
| X-Dimension (mil)         |          | 25.9     |
| Module Height (mil)       |          | 25.9     |
| Module Width (mil)        |          | 26.1     |
| Symbol Version            |          | 3        |
| Error Correction Capacity |          | M        |
| Scan Angle                |          | 269      |
| ISO/ANSI Avg              | # 3 of 5 | A 4.0    |



**MUNAZO Inc.**